

(FILE 'HOME' ENTERED AT 20:49:42 ON 27 MAY 2004)

FILE 'REGISTRY' ENTERED AT 20:50:36 ON 27 MAY 2004  
L1 554 S P.LKTK/SQSP

FILE 'CAPLUS' ENTERED AT 20:50:59 ON 27 MAY 2004  
L2 336 S L1  
L3 19 S L2 AND STAT  
L4 17 S L2 AND (INTERFERON OR IFN#)  
L5 25 S L3 OR L4

FILE 'REGISTRY' ENTERED AT 20:58:57 ON 27 MAY 2004  
L6 60 S L1 AND SQL<100  
L7 16 S L1 AND SQL<50

FILE 'CAPLUS' ENTERED AT 21:00:03 ON 27 MAY 2004  
L8 9 S L7

FILE 'REGISTRY' ENTERED AT 21:01:10 ON 27 MAY 2004  
L9 1 S L1 AND (180162-19-0)/RN  
L10 967 S A.LKTK/SQSP  
L11 0 S L10 AND STAT#  
L12 0 S L10 AND (INTERFERON OR IFN#)

FILE 'CAPLUS' ENTERED AT 21:04:37 ON 27 MAY 2004  
L13 416 S L10  
L14 8 S L13 AND STAT#  
L15 5 S L13 AND (INTERFERON OR IFN#)

FILE 'DGENE' ENTERED AT 21:06:49 ON 27 MAY 2004  
RUN GETSEQ  
-----  
L16 RUN STATEMENT CREATED  
L17 1 S L16 AND (STAT# OR INTERFERON OR IFN#)

FILE 'PCTGEN' ENTERED AT 21:08:12 ON 27 MAY 2004  
RUN GETSEQ  
-----  
L18 RUN STATEMENT CREATED  
L19 0 S L18 AND (STAT# OR INTERFERON OR IFN#)

FILE 'REGISTRY' ENTERED AT 21:09:10 ON 27 MAY 2004  
L20 491 S P.LATK/SQSP

FILE 'CAPLUS' ENTERED AT 21:09:29 ON 27 MAY 2004  
L21 245 S L20  
L22 12 S L21 AND (STAT# OR INTERFERON OR IFN#)

FILE 'REGISTRY' ENTERED AT 21:12:50 ON 27 MAY 2004  
L23 1 S L20 AND (391973-98-1)/RN  
L24 1 S L20 AND (131201-27-9)/RN  
L25 1 S L20 AND (128826-24-4)/RN

FILE 'DGENE' ENTERED AT 21:15:13 ON 27 MAY 2004  
RUN GETSEQ  
-----  
L26 RUN STATEMENT CREATED  
L27 1 S L26 AND (STAT# OR INTERFERON OR IFN#)

FILE 'PCTGEN' ENTERED AT 21:15:55 ON 27 MAY 2004  
RUN GETSEQ

```

-----
L28  RUN STATEMENT CREATED
L29      0 S L28 AND (STAT# OR INTERFERON OR IFN#)

FILE 'REGISTRY' ENTERED AT 21:16:30 ON 27 MAY 2004
L30      812 S P.LKAK/SQSP

FILE 'CAPLUS' ENTERED AT 21:17:05 ON 27 MAY 2004
L31      416 S L30
L32      15 S L31 AND (STAT# OR INTERFERON OR IFN#)

FILE 'REGISTRY' ENTERED AT 21:19:24 ON 27 MAY 2004
L33      1 S L30 AND (249550-21-8)/RN

FILE 'DGENE' ENTERED AT 21:20:29 ON 27 MAY 2004
      RUN GETSEQ
-----

L34  RUN STATEMENT CREATED
L35      2 S L34 AND (STAT# OR INTERFERON OR IFN#)

FILE 'REGISTRY' ENTERED AT 21:22:53 ON 27 MAY 2004
L36      17 S PYLKTA/SQSP

FILE 'CAPLUS' ENTERED AT 21:23:19 ON 27 MAY 2004
L37      10 S L36

FILE 'DGENE' ENTERED AT 21:24:34 ON 27 MAY 2004
      RUN GETSEQ
-----

L38  RUN STATEMENT CREATED

FILE 'PCTGEN' ENTERED AT 21:25:03 ON 27 MAY 2004
      RUN GETSEQ
-----

L39  RUN STATEMENT CREATED

FILE 'REGISTRY' ENTERED AT 21:25:19 ON 27 MAY 2004
L40      203288 S P.LK/SQSP
L41      3239 S L40 AND SQL<50
L42      1213 S L40 AND SQL<21

FILE 'CAPLUS' ENTERED AT 21:26:23 ON 27 MAY 2004
L43      1652 S L42
L44      58 S L43 AND (STAT# OR INTERFERON OR IFN#)
L45      43 S L44 AND PY<2001

FILE 'CAPLUS' ENTERED AT 21:27:38 ON 27 MAY 2004
L46      43 S L43 AND STAT#
L47      12 S L43 AND (STAT OR STAT1# OR STAT2# OR STAT3# OR STAT4# OR STAT

FILE 'REGISTRY' ENTERED AT 21:31:18 ON 27 MAY 2004
L48      1 S L40 AND (182200-02-8)/RN
L49      1 S L40 AND (180162-19-0)/RN
L50      1 S L40 AND (180162-24-7)/RN
L51      203288 S P.LK/SQSP
L52      1161 S L51 AND SQL<20

FILE 'CAPLUS' ENTERED AT 21:36:01 ON 27 MAY 2004
L53      9 S L52 AND STAT

FILE 'REGISTRY' ENTERED AT 21:38:01 ON 27 MAY 2004
L54      82977 S P.FK/SQSP

```

L55 405 S L54 AND SQL<20  
FILE 'CAPLUS' ENTERED AT 21:38:31 ON 27 MAY 2004  
L56 288 S L55  
L57 6 S L56 AND STAT  
FILE 'REGISTRY' ENTERED AT 21:39:15 ON 27 MAY 2004  
L58 5621 S L54 AND SQL<100  
FILE 'CAPLUS' ENTERED AT 21:39:55 ON 27 MAY 2004  
L59 1485 S L58  
L60 56 S L59 AND STAT  
FILE 'REGISTRY' ENTERED AT 21:40:25 ON 27 MAY 2004  
L61 1302 S L54 AND SQL<50  
FILE 'CAPLUS' ENTERED AT 21:40:44 ON 27 MAY 2004  
L62 671 S L61  
L63 29 S L62 AND STAT  
FILE 'DGENE' ENTERED AT 21:43:13 ON 27 MAY 2004  
RUN GETSEQ  
-----  
L64 RUN STATEMENT CREATED  
L65 1 S L64 AND STAT  
FILE 'REGISTRY' ENTERED AT 21:44:27 ON 27 MAY 2004  
L66 328578 S A.LK/SQSP  
FILE 'CAPLUS' ENTERED AT 21:45:23 ON 27 MAY 2004  
FILE 'REGISTRY' ENTERED AT 21:45:36 ON 27 MAY 2004  
L67 5887 S L66 AND SQL<50  
FILE 'CAPLUS' ENTERED AT 21:46:07 ON 27 MAY 2004  
L68 3209 S L67  
L69 42 S L68 AND STAT  
L70 37 S L69 AND PY<2001  
FILE 'DGENE' ENTERED AT 21:47:52 ON 27 MAY 2004  
RUN GETSEQ  
-----  
L71 RUN STATEMENT CREATED  
L72 9 S L71 AND STAT  
FILE 'REGISTRY' ENTERED AT 21:51:29 ON 27 MAY 2004  
L73 155969 S YLK/SQSP  
L74 1241 S L73 AND SQL<20  
FILE 'CAPLUS' ENTERED AT 21:51:57 ON 27 MAY 2004  
L75 644 S L74  
L76 6 S L75 AND STAT  
FILE 'REGISTRY' ENTERED AT 21:53:46 ON 27 MAY 2004  
L77 1 S L73 AND (180162-19-0)/RN  
L78 1 S L73 AND (164917-66-2)/RN  
L79 1 S L73 AND (164917-68-4)/RN  
FILE 'REGISTRY' ENTERED AT 21:57:34 ON 27 MAY 2004  
L80 554 S P.LKTK/SQSP  
L81 16 S L80 AND SQL<50

L82 FILE 'CAPLUS' ENTERED AT 21:58:22 ON 27 MAY 2004  
9 S L81

L83 FILE 'REGISTRY' ENTERED AT 21:59:34 ON 27 MAY 2004  
203288 S P.LK/SQSP  
L84 1161 S L83 AND SQL<20

L85 FILE 'CAPLUS' ENTERED AT 22:00:05 ON 27 MAY 2004  
1603 S L84  
L86 9 S L85 AND STAT

L87 FILE 'REGISTRY' ENTERED AT 22:01:23 ON 27 MAY 2004  
310056 S P.LA/SQSP  
L88 809 S L87 AND SQL<20

L89 FILE 'CAPLUS' ENTERED AT 22:03:37 ON 27 MAY 2004  
590 S L88  
L90 9 S L89 AND STAT

FILE 'DGENE' ENTERED AT 22:04:46 ON 27 MAY 2004  
RUN GETSEQ  
-----

L91 RUN STATEMENT CREATED  
L92 8 S L91 AND STAT  
L93 0 S L92 AND SQL<20

L94 FILE 'REGISTRY' ENTERED AT 22:07:25 ON 27 MAY 2004  
2226504 S A.L/SQSP  
L95 33419 S L94 AND SQL<20

L96 FILE 'CAPLUS' ENTERED AT 22:08:18 ON 27 MAY 2004  
25577 S L95  
L97 62 S L96 AND STAT  
L98 50 S L97 AND PY<2001

FILE 'REGISTRY' ENTERED AT 22:10:08 ON 27 MAY 2004

=> s l94 and (187532-48-5)/rn  
1 (187532-48-5)/RN  
L99 1 L94 AND (187532-48-5)/RN

=> d sqide

L99 ANSWER 1 OF 1 REGISTRY COPYRIGHT 2004 ACS on STN  
RN 187532-48-5 REGISTRY  
CN L-Glutamine, L-asparaginyl-L-threonyl-L- $\alpha$ -aspartyl-L-alanyl-O-  
phosphono-L-tyrosyl-L-leucyl-L-seryl-L-leucyl-L-glutaminyl-L- $\alpha$ -  
glutamyl-L-leucyl- (9CI) (CA INDEX NAME)  
FS PROTEIN SEQUENCE; STEREOSEARCH  
SQL 12  
NTE modified

| type         | location | description    |
|--------------|----------|----------------|
| modification | Tyr-5    | phosphono<PO2> |

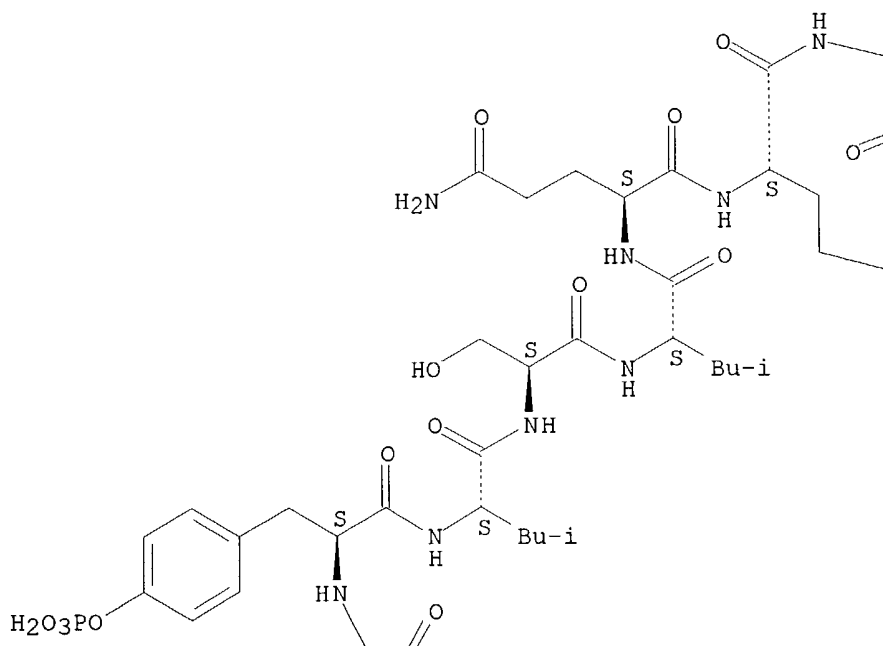
SEQ 1 NTDAYLSLQE LQ  
===

HITS AT: 4-6  
MF C60 H96 N15 O26 P  
SR CA

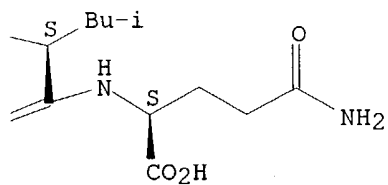
LC STN Files: CA, CAPLUS, TOXCENTER, USPATFULL  
DT.CA CAplus document type: Patent  
RL.P Roles from patents: BIOL (Biological study); PROC (Process); USES  
(Uses)

Absolute stereochemistry.

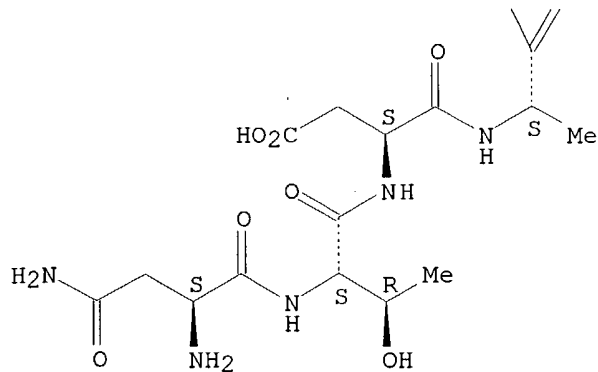
PAGE 1-A



PAGE 1-B



CO<sub>2</sub>H



1 REFERENCES IN FILE CA (1907 TO DATE)  
 1 REFERENCES IN FILE CAPLUS (1907 TO DATE)

=> d history

(FILE 'HOME' ENTERED AT 20:49:42 ON 27 MAY 2004)

L1 FILE 'REGISTRY' ENTERED AT 20:50:36 ON 27 MAY 2004  
 554 S P.LKTK/SQSP

L2 FILE 'CAPLUS' ENTERED AT 20:50:59 ON 27 MAY 2004  
 336 S L1  
 L3 19 S L2 AND STAT  
 L4 17 S L2 AND (INTERFERON OR IFN#)  
 L5 25 S L3 OR L4

L6 FILE 'REGISTRY' ENTERED AT 20:58:57 ON 27 MAY 2004  
 60 S L1 AND SQL<100  
 L7 16 S L1 AND SQL<50

L8 FILE 'CAPLUS' ENTERED AT 21:00:03 ON 27 MAY 2004  
 9 S L7

L9 FILE 'REGISTRY' ENTERED AT 21:01:10 ON 27 MAY 2004  
 1 S L1 AND (180162-19-0)/RN  
 L10 967 S A.LKTK/SQSP  
 L11 0 S L10 AND STAT#  
 L12 0 S L10 AND (INTERFERON OR IFN#)

L13 FILE 'CAPLUS' ENTERED AT 21:04:37 ON 27 MAY 2004  
 416 S L10  
 L14 8 S L13 AND STAT#  
 L15 5 S L13 AND (INTERFERON OR IFN#)

FILE 'DGENE' ENTERED AT 21:06:49 ON 27 MAY 2004  
 RUN GETSEQ

L16 RUN STATEMENT CREATED  
 L17 1 S L16 AND (STAT# OR INTERFERON OR IFN#)

FILE 'PCTGEN' ENTERED AT 21:08:12 ON 27 MAY 2004  
 RUN GETSEQ

L18 RUN STATEMENT CREATED  
 L19 0 S L18 AND (STAT# OR INTERFERON OR IFN#)

L20 FILE 'REGISTRY' ENTERED AT 21:09:10 ON 27 MAY 2004  
491 S P.LATK/SQSP

L21 FILE 'CAPLUS' ENTERED AT 21:09:29 ON 27 MAY 2004  
245 S L20  
L22 12 S L21 AND (STAT# OR INTERFERON OR IFN#)

L23 FILE 'REGISTRY' ENTERED AT 21:12:50 ON 27 MAY 2004  
1 S L20 AND (391973-98-1)/RN  
L24 1 S L20 AND (131201-27-9)/RN  
L25 1 S L20 AND (128826-24-4)/RN

FILE 'DGENE' ENTERED AT 21:15:13 ON 27 MAY 2004  
RUN GETSEQ  
-----  
L26 RUN STATEMENT CREATED  
L27 1 S L26 AND (STAT# OR INTERFERON OR IFN#)

FILE 'PCTGEN' ENTERED AT 21:15:55 ON 27 MAY 2004  
RUN GETSEQ  
-----  
L28 RUN STATEMENT CREATED  
L29 0 S L28 AND (STAT# OR INTERFERON OR IFN#)

L30 FILE 'REGISTRY' ENTERED AT 21:16:30 ON 27 MAY 2004  
812 S P.LKAK/SQSP

L31 FILE 'CAPLUS' ENTERED AT 21:17:05 ON 27 MAY 2004  
416 S L30  
L32 15 S L31 AND (STAT# OR INTERFERON OR IFN#)

L33 FILE 'REGISTRY' ENTERED AT 21:19:24 ON 27 MAY 2004  
1 S L30 AND (249550-21-8)/RN

FILE 'DGENE' ENTERED AT 21:20:29 ON 27 MAY 2004  
RUN GETSEQ  
-----  
L34 RUN STATEMENT CREATED  
L35 2 S L34 AND (STAT# OR INTERFERON OR IFN#)

L36 FILE 'REGISTRY' ENTERED AT 21:22:53 ON 27 MAY 2004  
17 S PYLKTA/SQSP

L37 FILE 'CAPLUS' ENTERED AT 21:23:19 ON 27 MAY 2004  
10 S L36

FILE 'DGENE' ENTERED AT 21:24:34 ON 27 MAY 2004  
RUN GETSEQ  
-----  
L38 RUN STATEMENT CREATED

FILE 'PCTGEN' ENTERED AT 21:25:03 ON 27 MAY 2004  
RUN GETSEQ  
-----  
L39 RUN STATEMENT CREATED

L40 FILE 'REGISTRY' ENTERED AT 21:25:19 ON 27 MAY 2004  
203288 S P.LK/SQSP  
L41 3239 S L40 AND SQL<50  
L42 1213 S L40 AND SQL<21

FILE 'CAPLUS' ENTERED AT 21:26:23 ON 27 MAY 2004  
 L43 1652 S L42  
 L44 58 S L43 AND (STAT# OR INTERFERON OR IFN#)  
 L45 43 S L44 AND PY<2001

FILE 'CAPLUS' ENTERED AT 21:27:38 ON 27 MAY 2004  
 L46 43 S L43 AND STAT#  
 L47 12 S L43 AND (STAT OR STAT1# OR STAT2# OR STAT3# OR STAT4# OR STAT

FILE 'REGISTRY' ENTERED AT 21:31:18 ON 27 MAY 2004  
 L48 1 S L40 AND (182200-02-8)/RN  
 L49 1 S L40 AND (180162-19-0)/RN  
 L50 1 S L40 AND (180162-24-7)/RN  
 L51 203288 S P.LK/SQSP  
 L52 1161 S L51 AND SQL<20

FILE 'CAPLUS' ENTERED AT 21:36:01 ON 27 MAY 2004  
 L53 9 S L52 AND STAT

FILE 'REGISTRY' ENTERED AT 21:38:01 ON 27 MAY 2004  
 L54 82977 S P.FK/SQSP  
 L55 405 S L54 AND SQL<20

FILE 'CAPLUS' ENTERED AT 21:38:31 ON 27 MAY 2004  
 L56 288 S L55  
 L57 6 S L56 AND STAT

FILE 'REGISTRY' ENTERED AT 21:39:15 ON 27 MAY 2004  
 L58 5621 S L54 AND SQL<100

FILE 'CAPLUS' ENTERED AT 21:39:55 ON 27 MAY 2004  
 L59 1485 S L58  
 L60 56 S L59 AND STAT

FILE 'REGISTRY' ENTERED AT 21:40:25 ON 27 MAY 2004  
 L61 1302 S L54 AND SQL<50

FILE 'CAPLUS' ENTERED AT 21:40:44 ON 27 MAY 2004  
 L62 671 S L61  
 L63 29 S L62 AND STAT

FILE 'DGENE' ENTERED AT 21:43:13 ON 27 MAY 2004  
 RUN GETSEQ  
 -----  
 L64 RUN STATEMENT CREATED  
 L65 1 S L64 AND STAT

FILE 'REGISTRY' ENTERED AT 21:44:27 ON 27 MAY 2004  
 L66 328578 S A.LK/SQSP

FILE 'CAPLUS' ENTERED AT 21:45:23 ON 27 MAY 2004

FILE 'REGISTRY' ENTERED AT 21:45:36 ON 27 MAY 2004  
 L67 5887 S L66 AND SQL<50

FILE 'CAPLUS' ENTERED AT 21:46:07 ON 27 MAY 2004  
 L68 3209 S L67  
 L69 42 S L68 AND STAT  
 L70 37 S L69 AND PY<2001

FILE 'DGENE' ENTERED AT 21:47:52 ON 27 MAY 2004  
 RUN GETSEQ



```
-----
L71  RUN STATEMENT CREATED
L72      9 S L71 AND STAT

FILE 'REGISTRY' ENTERED AT 21:51:29 ON 27 MAY 2004
L73  155969 S YLK/SQSP
L74      1241 S L73 AND SQL<20

FILE 'CAPLUS' ENTERED AT 21:51:57 ON 27 MAY 2004
L75      644 S L74
L76      6 S L75 AND STAT

FILE 'REGISTRY' ENTERED AT 21:53:46 ON 27 MAY 2004
L77      1 S L73 AND (180162-19-0)/RN
L78      1 S L73 AND (164917-66-2)/RN
L79      1 S L73 AND (164917-68-4)/RN

FILE 'REGISTRY' ENTERED AT 21:57:34 ON 27 MAY 2004
L80      554 S P.LKTK/SQSP
L81      16 S L80 AND SQL<50

FILE 'CAPLUS' ENTERED AT 21:58:22 ON 27 MAY 2004
L82      9 S L81

FILE 'REGISTRY' ENTERED AT 21:59:34 ON 27 MAY 2004
L83  203288 S P.LK/SQSP
L84      1161 S L83 AND SQL<20

FILE 'CAPLUS' ENTERED AT 22:00:05 ON 27 MAY 2004
L85      1603 S L84
L86      9 S L85 AND STAT

FILE 'REGISTRY' ENTERED AT 22:01:23 ON 27 MAY 2004
L87  310056 S P.LA/SQSP
L88      809 S L87 AND SQL<20

FILE 'CAPLUS' ENTERED AT 22:03:37 ON 27 MAY 2004
L89      590 S L88
L90      9 S L89 AND STAT

FILE 'DGENE' ENTERED AT 22:04:46 ON 27 MAY 2004
      RUN GETSEQ
-----

L91  RUN STATEMENT CREATED
L92      8 S L91 AND STAT
L93      0 S L92 AND SQL<20

FILE 'REGISTRY' ENTERED AT 22:07:25 ON 27 MAY 2004
L94  2226504 S A.L/SQSP
L95      33419 S L94 AND SQL<20

FILE 'CAPLUS' ENTERED AT 22:08:18 ON 27 MAY 2004
L96  25577 S L95
L97      62 S L96 AND STAT
L98      50 S L97 AND PY<2001

FILE 'REGISTRY' ENTERED AT 22:10:08 ON 27 MAY 2004
L99      1 S L94 AND (187532-48-5)/RN
```